



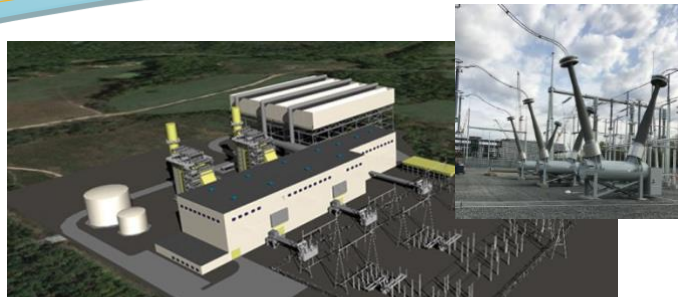
PSEG Fossil
Brandywine, MD
Owner's Engineer for 755MW Power Plant

ABOUT THE CLIENT

PSEG Fossil is a subsidiary of PSEG Power, an independent power producer that generates and sells electricity in the wholesale market, with a fleet totaling more than 11,600 MWs of electric generating capacity. With the addition of the PSEG Keys Energy Center, the combined-cycle gas turbine fleet would grow to represent in excess of 4,000 MWs, or approximately one third of the fleet.

REFERENCE

Thomas McNulty
 Director, Fossil Procurement
 PSEG Fossil
 (973) 430-8341
thomas.mculty@pseg.com



CONSTRUCTION COST:
 \$875 Million

YEAR COMPLETED:
 December 2018



OWNER'S ENGINEER FOR PSEG KEYS ENERGY CENTER

Concord Engineering was selected by PSEG as their Owner's Engineer for a 755 MW power plant, based on its experienced combined-cycle engineering staff and the company's many successes with previous PSEG projects. Concord supported the project onsite, and from its home office, throughout all phases of the project including construction, start-up and performance testing.

The PSEG Keys Energy Center, located in Prince George's County Maryland, added needed capacity and energy to the state of Maryland and the surrounding region. The \$825 - \$875 million investment will supply PJM through the Potomac Electric Power Company's (PEPCO) 500 kV transmission system with enough clean, efficient, and reliable energy to power 500,000 homes. The project includes a 500kV AIS switchyard interconnecting with 500kV grid substation.

The energy center will use state-of-the-art generating technology, including a full complement of emissions controls and run on clean, efficient natural gas. Specifically, the plant is arranged such that two (2) Siemens F-Class gas turbines exhaust into Heat Recovery Steam Generators (HRSG) equipped with supplementary firing (Duct Burners). The HRSGs produce steam that is used to drive a Siemens steam turbine. The steam turbine exhausts to an air cooled condenser.

Concord provided commentary on the P&IDs, General Arrangements, Single Lines and other key EPC deliverables as related to operability and maintainability, while ensuring contract compliance by the EPC contractor. Concord also assisted with obtaining permitting, and assembling permit packages for approval by the local authorities.